

Combining Open and Financial Data for Targeted Policy Solutions

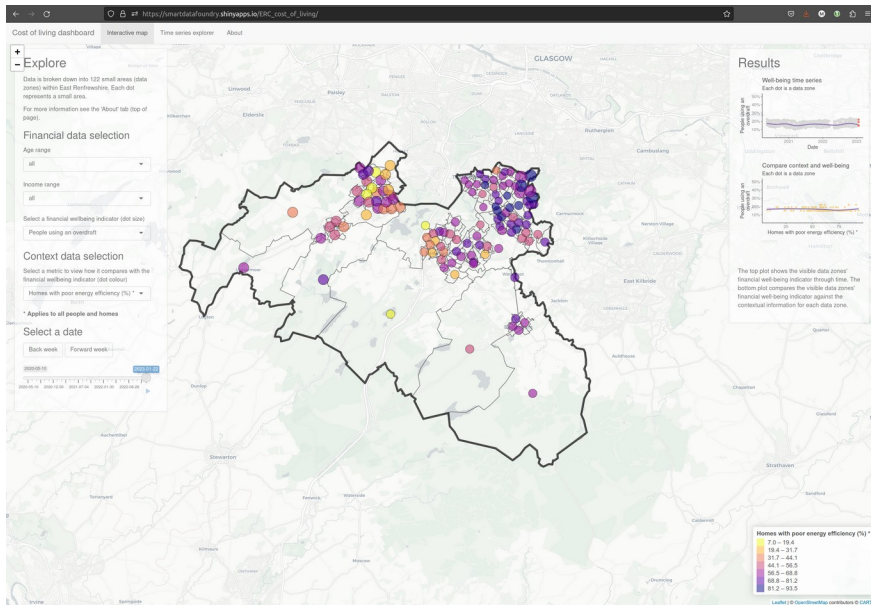
Dr Mike Spencer



Talk structure

Case study

Data and process



NatWest Group



Scottish Government
Riaghaltas na h-Alba
gov.scot

STATISTICS.GOV.SCOT



Case study

- East Renfrewshire Council
- Locations needing cost of living support
- Emerging financial vulnerability



Case study

- Intervention aimed at areas, not individuals
- Context surrounding financial well-being
- Opportunity to incorporate other data of interest

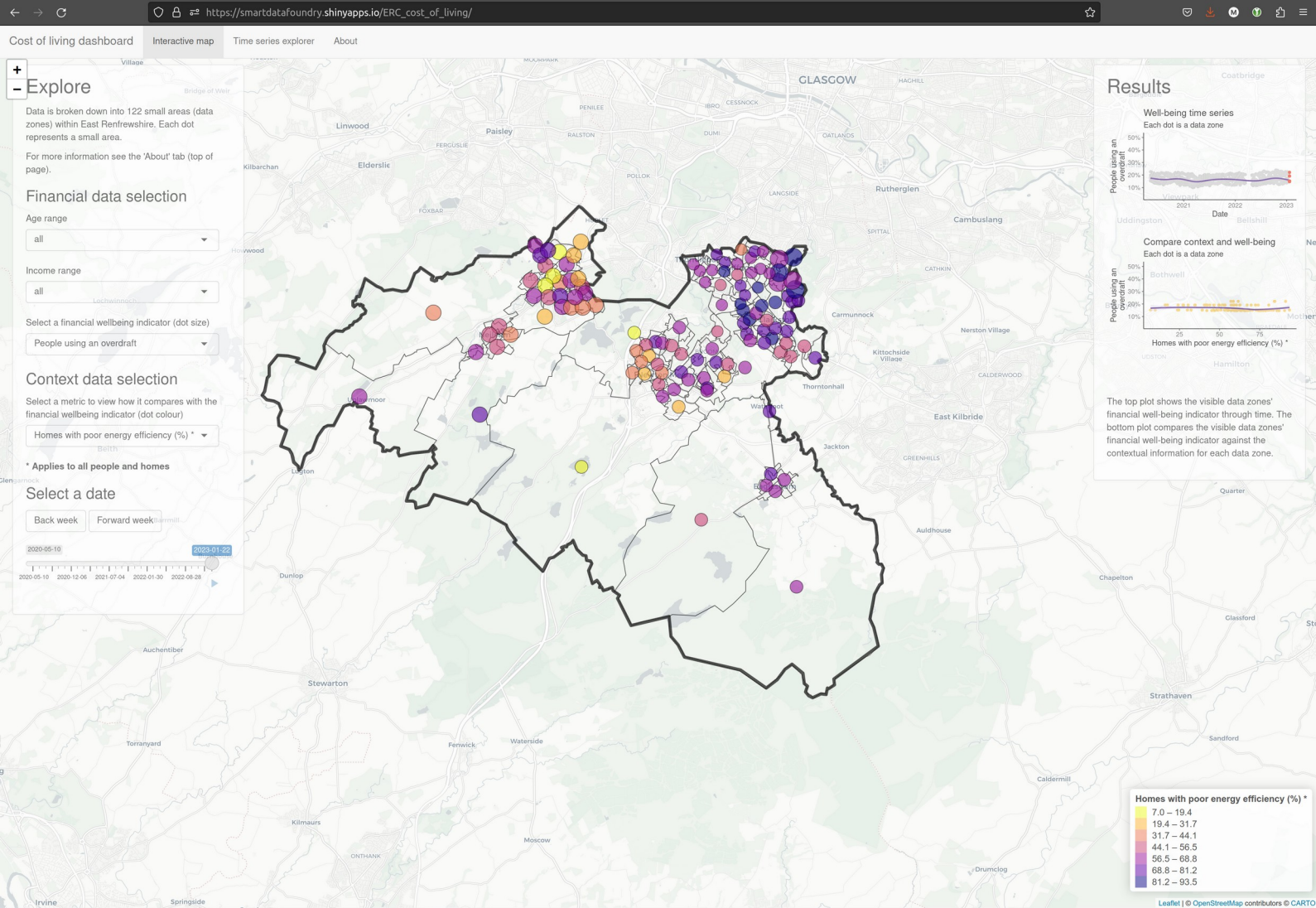
Data model

- Overdraft use
 - Disposable income
 - Benefits income
 - Essential expenditure
 - ...
- Young mums
 - Energy efficiency
 - Childcare
 - Disability
 - Healthcare
 - School attainment
 - ...



In practice?





Future developments

- Enable government access to research
- Include business data
- Iterate on financial well-being indicators
- Expand open, contextual datasets



Data and process



About Smart Data Foundry

Smart Data Foundry is a **spin-out from the University of Edinburgh's** £600m flagship Data Driven Innovation programme.

Our purpose – **to inspire financial innovation and improve people's lives by unlocking the power of financial data.**

A **not-for-profit organisation** with initial seed capital provided by the UK Government's Department for Business, Innovation & Industrial Strategy through the UK Research & Innovation Strength in Places Fund.



Smart Data Foundry Missions

Unlocking the power of financial data to help tackle the most pressing current issues – the cost of living crisis and countering climate change, and inspiring financial innovation through data

STOP THE SQUEEZE



Helping communities and small businesses with the cost of living crisis

INSPIRING FINANCIAL INNOVATION



Using data to inspire and accelerate financial innovation

COUNTERING CLIMATE CHANGE

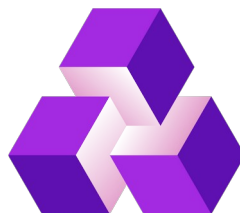


Helping the world halt and counter Climate Change



Data

- Account data for 1.2M customers
- Great Britain coverage
- Aggregated over categories and time
- Pseudo-anonymised
- Updated weekly



NatWest Group

Process

- Information governance modelled on eDRIS
- epcc national safe haven
- Data minimisation
- 5 safes – projects, people, settings, data & outputs
- Researcher data access and support



Explore ▾

Tools ▾

This site hosts **294 linked data datasets** and **10 downloadable files and web links** which you can browse and download in multiple formats, and access programmatically using [our APIs](#).

LATEST UPDATES

Child Winter Heating Assistance	09/05/2023
Local Authority Vacant Dwellings (vacancies arising during the year)	05/05/2023
Local Authority Vacant Dwellings	05/05/2023
Local Authority Housing Lettings	05/05/2023
Local Authority Housing Stock by Age	05/05/2023

EXPLORE BY THEME

- [Access to Services](#)
- [Business, Enterprise and Energy](#)
- [Children and Young People](#)
- [Community Wellbeing and Social Environment](#)
- [Crime and Justice](#)
- [Economic Activity, Benefits and Tax Credits](#)
- [Economy](#)
- [Education, Skills and Training](#)
- [Environment](#)
- [Geography](#)
- [Health and Social Care](#)
- [Housing](#)
- [Labour Force](#)
- [Management Information](#)
- [Population](#)
- [Reference](#)
- [Scottish Index of Multiple Deprivation](#)
- [Transport](#)

EXPLORE BY ORGANISATION

- [Accountant in Bankruptcy](#)
- [Care Inspectorate](#)
- [National Records of Scotland](#)
- [Public Health Scotland](#)
- [Registers of Scotland](#)
- [Revenue Scotland](#)
- [Scottish Fire and Rescue Service](#)
- [Scottish Government](#)
- [Scottish Natural Heritage](#)
- [SEPA](#)
- [Social Security Scotland](#)
- [Transport Scotland](#)
- [VisitScotland](#)



Contact

- michael.spencer@smartdatafoundry.com
- [@mikerspencer@mastodon.scot](https://masto.host/mikerspencer)
- [linkedin.com/in/mikerspencer/](https://www.linkedin.com/in/mikerspencer/)
- [@mikerspencer:matrix.org](https://matrix.org/@mikerspencer)
- smartdatafoundry.com

