

@RESPIREGlobal

www.ed.ac.uk/usher/respire

f RESPIREGlobal



Open Science, Data, and Methodologies: Lessons learned from NIHR-RESPIRE Network in Asia

Tapas Kumar Mohanty and Dr Simon Smith

4 Jun 2024

“Building a culture of Open Science across Asia”



THE UNIVERSITY
of EDINBURGH



UNIVERSITI
MALAYA

FUNDED BY

NIHR

National Institute for
Health and Care Research



**UK International
Development**

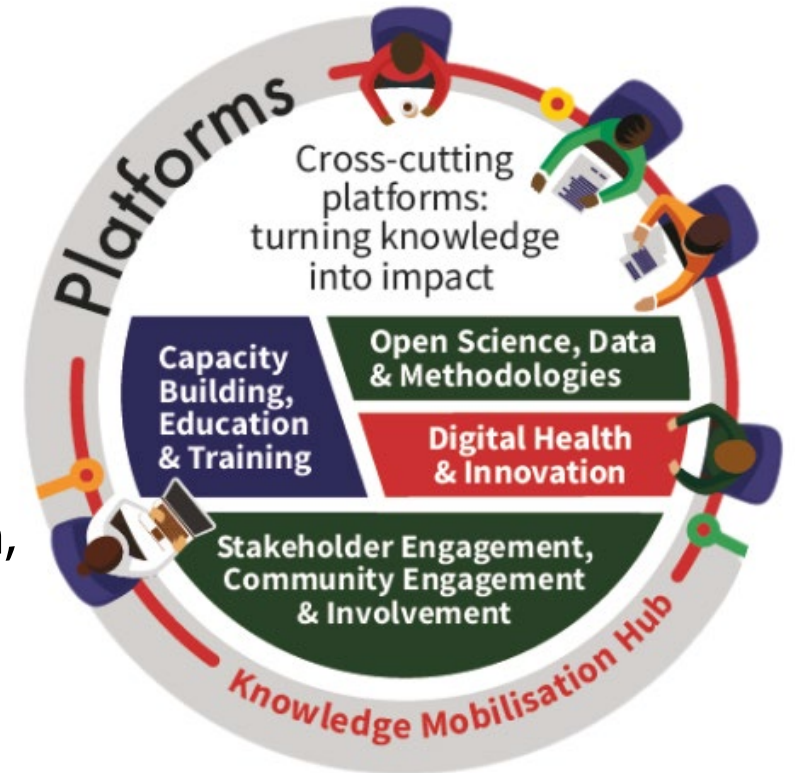
Partnership | Progress | Prosperity

NIHR Global Health Research Unit on Respiratory Health [RESPIRE]



RESPIRE aims to deliver low-cost, scalable policy and clinical interventions to reduce deaths and the wider health and societal impacts of respiratory disease in Asia, through its research programmes and supporting platforms.

RESPIRE is co-led by The University of Edinburgh and Universiti Malaya, with partners based in Bangladesh, Bhutan, India, Indonesia, Malaysia, Pakistan, Sri Lanka and the UK.



www.ed.ac.uk/usher/respire

 @RESPIREGlobal
 RESPIREGlobal

FUNDED BY
NIHR

National Institute for
Health and Care Research

 **UK International
Development**
Partnership | Progress | Prosperity

PLATFORM III: OPEN SCIENCE, DATA AND METHODOLOGIES

PLATFORM CO-LEADS



Mr Tathagata Bhattacharjee
ALPHA Network Data Analyst



Prof Christopher Weir
Personal Chair of Medical Statistics & Clinical Trials



www.ed.ac.uk/usher/respire

 @RESPIREGlobal
 RESPIREGlobal

FUNDED BY
NIHR

National Institute for
Health and Care Research

 **UK International
Development**
Partnership | Progress | Prosperity



Dr Simon Smith

Research Data Support Officer



www.ed.ac.uk/usher/respire

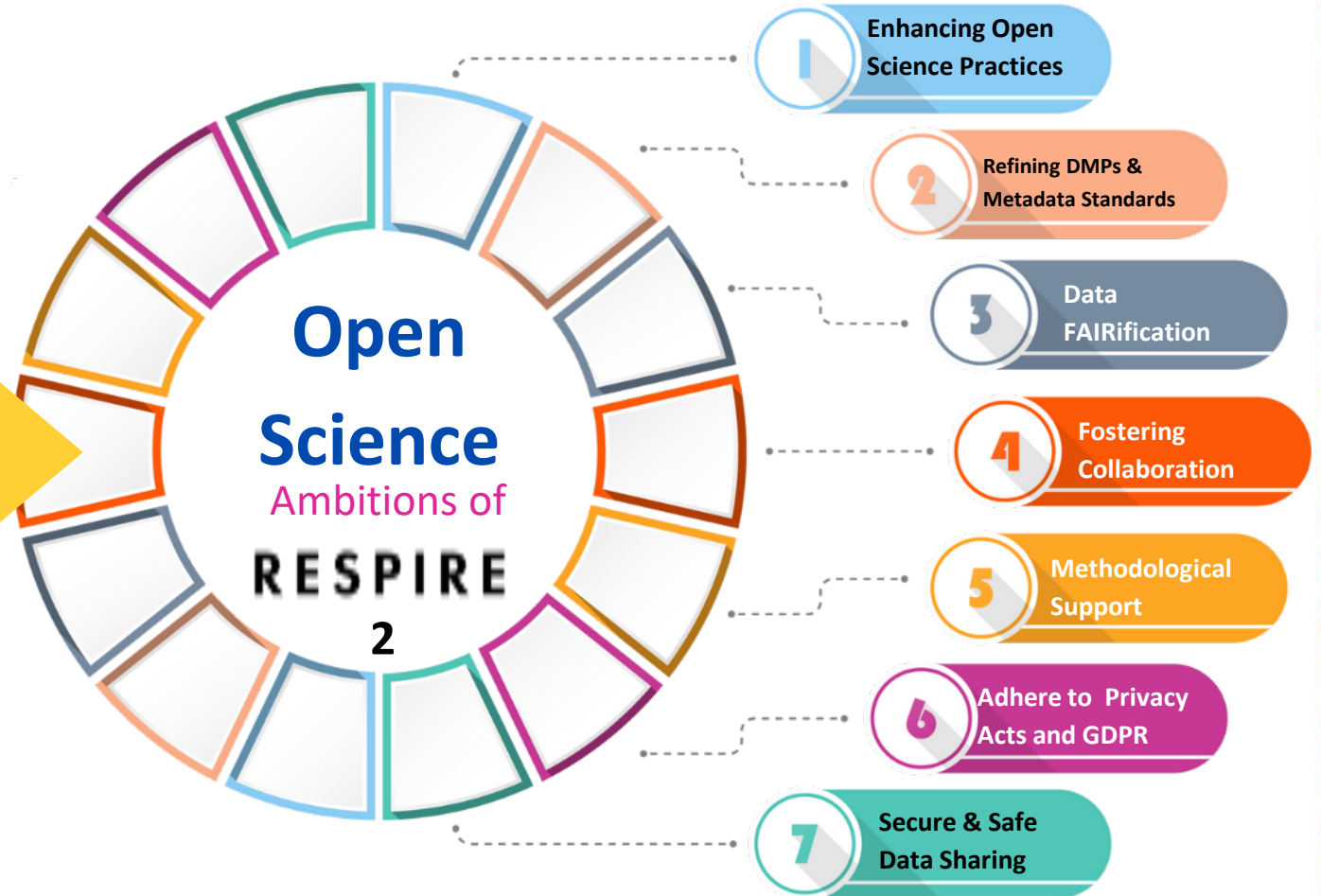
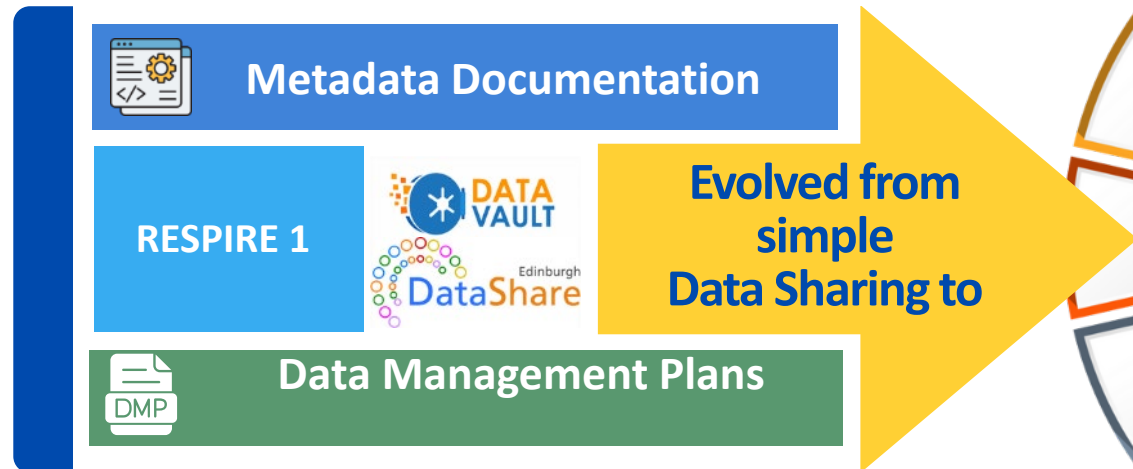
 @RESPIREGlobal
 RESPIREGlobal

FUNDED BY
NIHR

National Institute for
Health and Care Research

 **UK International
Development**
Partnership | Progress | Prosperity

The challenge: Diverse context, Lack of shared standards, policies, or OS awareness



From Fragmented data ecosystems in LMICs
www.ed.ac.uk/usher/respire

@RESPIREGlobal
RESPIREGlobal



To Build capacity in Open Science practices

FUNDED BY
NIHR

National Institute for
Health and Care Research

**UK International
Development**
Partnership | Progress | Prosperity

Methodological Guidance and Support



Identifying secure
repositories for data
storage and sharing



Enabling the
discovery of
RESPIRE dataset



Data sharing,
transfer,
depositing, and
management



Advising partners on
data access
statements for
publications



Working with local
Data Champions



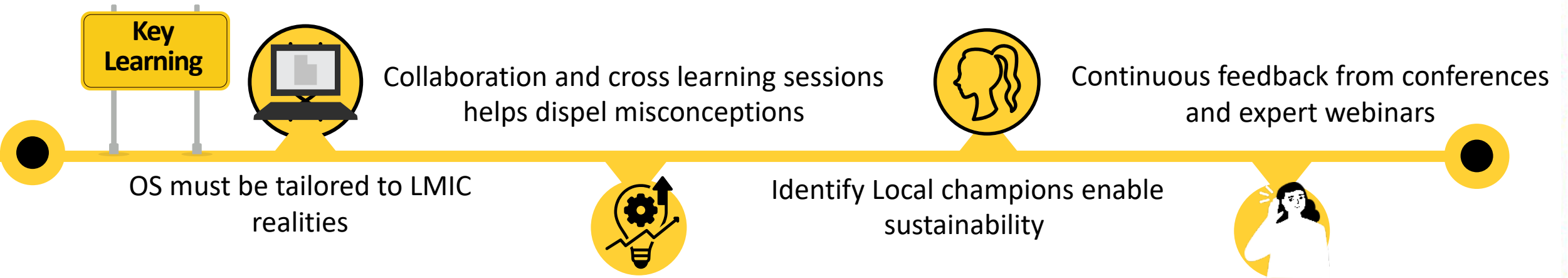
www.ed.ac.uk/usher/respire

 @RESPIREGlobal
 RESPIREGlobal

FUNDED BY
NIHR

National Institute for
Health and Care Research

 **UK International
Development**
Partnership | Progress | Prosperity



www.ed.ac.uk/usher/respire

 @RESPIREGlobal
 RESPIREGlobal

FUNDED BY

NIHR

National Institute for
Health and Care Research



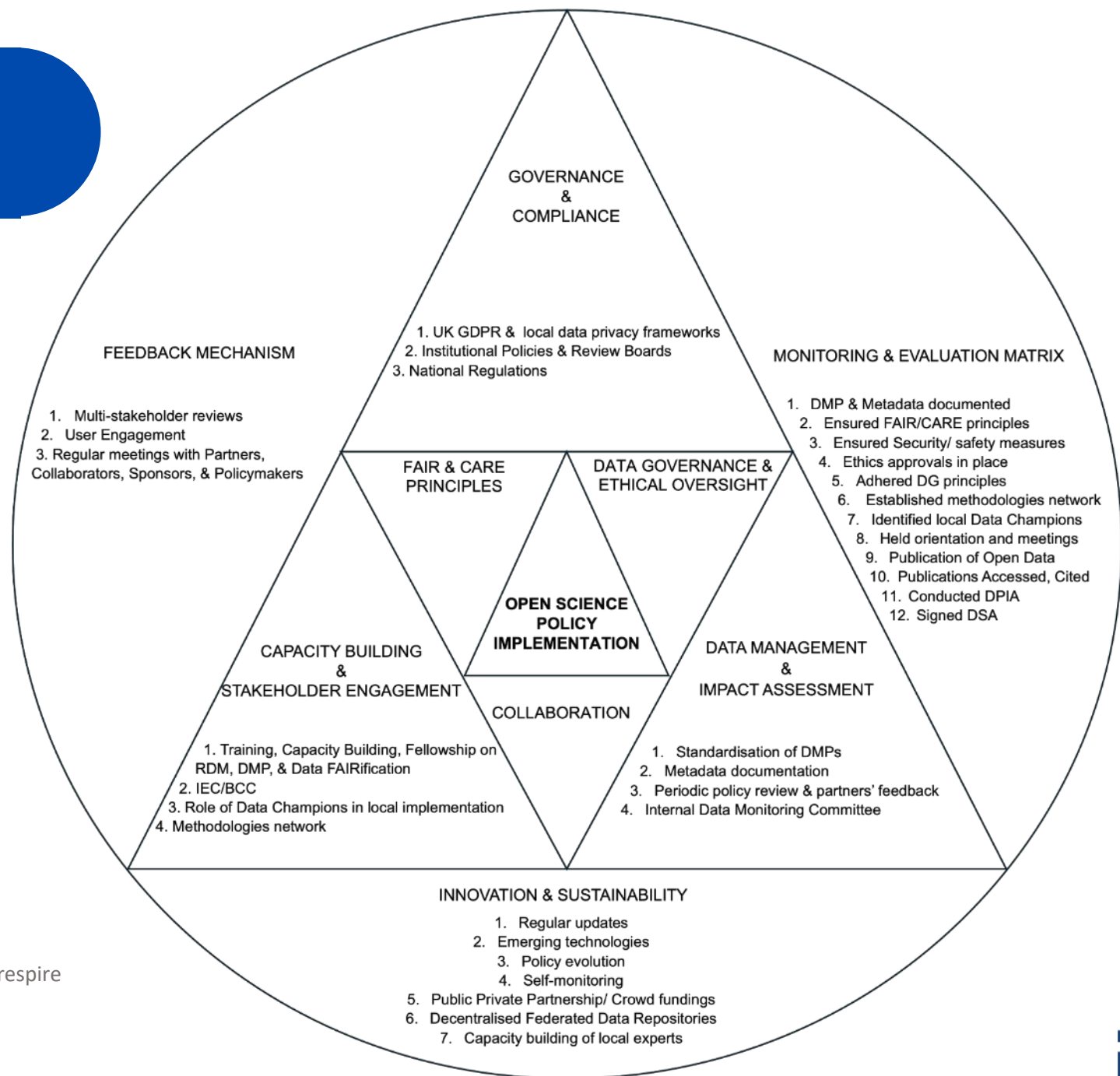
**UK International
Development**
Partnership | Progress | Prosperity

What We Did – A Journey from Compliance to Culture




[c.uk/usher/respire](https://www.respireglobal.org.uk/usher/respire)
PIREGlobal
REGlobal

Published OS conceptual framework (JoGH)



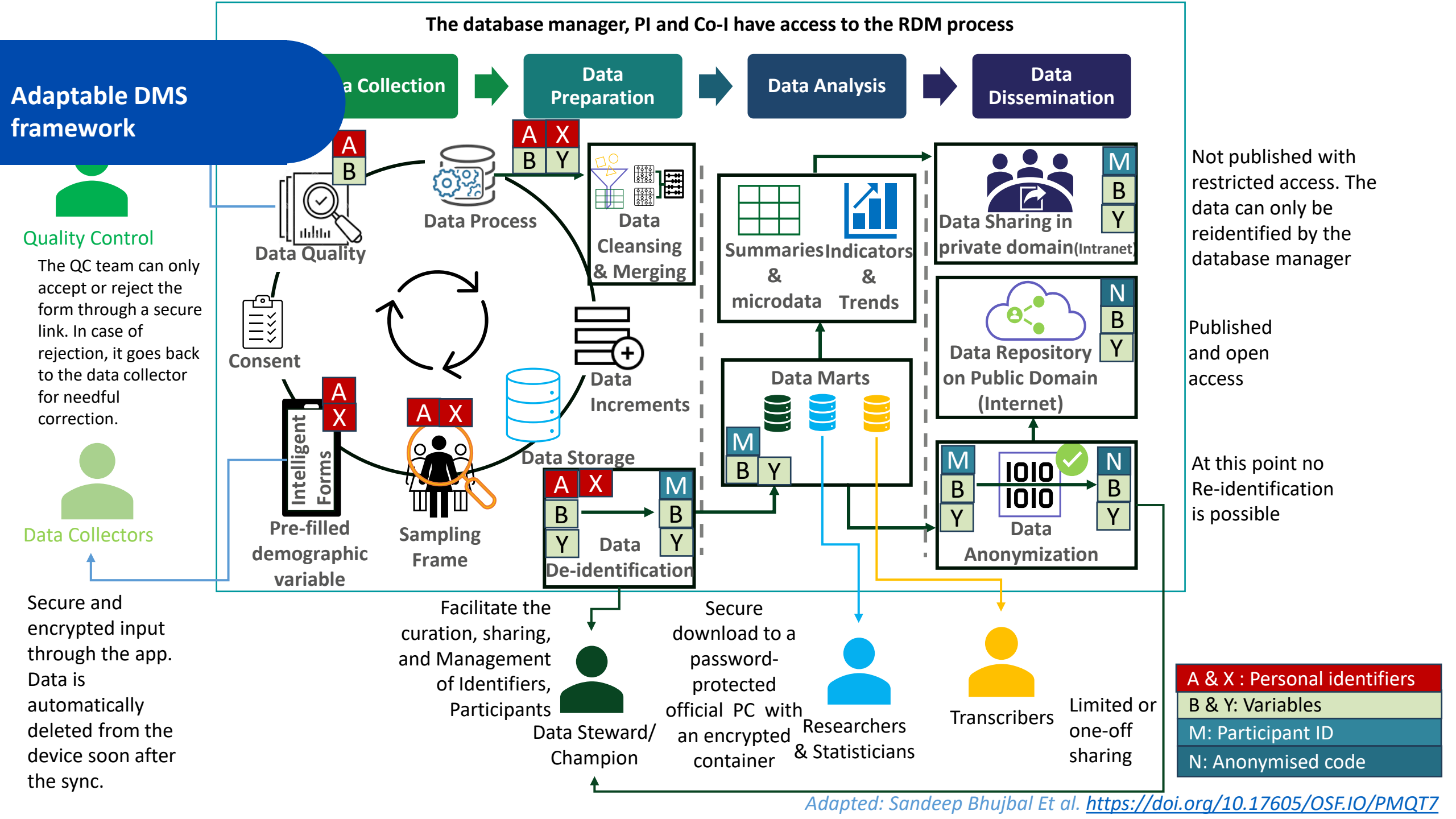
www.ed.ac.uk/usher/respire

 @RESPIREGlobal
 RESPIREGlobal

FUNDED BY
NIHR

National Institute for
Health and Care Research

 **UK International
Development**
Partnership | Progress | Prosperity



WHAT'S NEXT?

- ✓ Host in-person workshop to co-create OS framework for Global South
- ✓ Documenting best practices to publish Data Champion's Handbook



Join us in shaping inclusive Open Science systems globally!



www.ed.ac.uk/usher/respire

 @RESPIREGlobal
 RESPIREGlobal

FUNDED BY
NIHR

National Institute for
Health and Care Research

 **UK International
Development**
Partnership | Progress | Prosperity



Prof. Harry Campbell,
Co-Director of RESPIRE



Kerry Miller,
Open Research
Specialist, UoE



**Data management team of College of
Medicine and Veterinary, UoE**



Maeve



Dr. Simon Smith

Research Data
Support Officer, UoE

Christopher Weir,
Co-Lead, of RESPIRE
Platform III



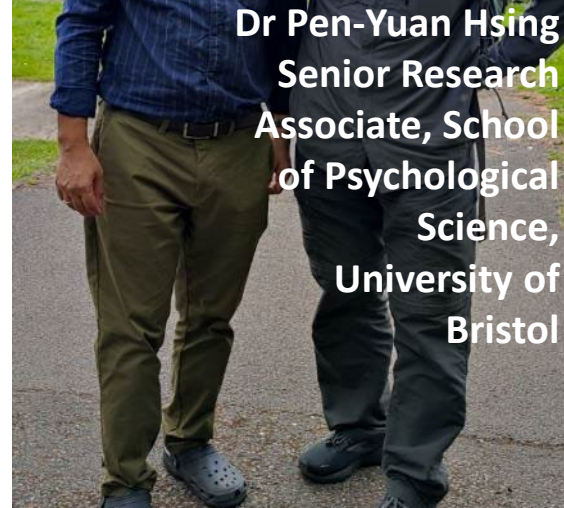
Keith Munro,
Research Data
Support Assistant,
UoE



**Laura Gonzalez
Rienda**



Bri Johns
GOSH
Community
Coordinator



Dr Pen-Yuan Hsing
Senior Research
Associate, School
of Psychological
Science,
University of
Bristol



"Open Science is not a tool, it's a trust-building process."
Thank you!

This research was funded by NIHR 16/136/109 and NIHR132826 using UK international development funding from the UK Government to support global health research. The views expressed in this publication are those of the author(s) and not necessarily those of the NIHR or the UK government.